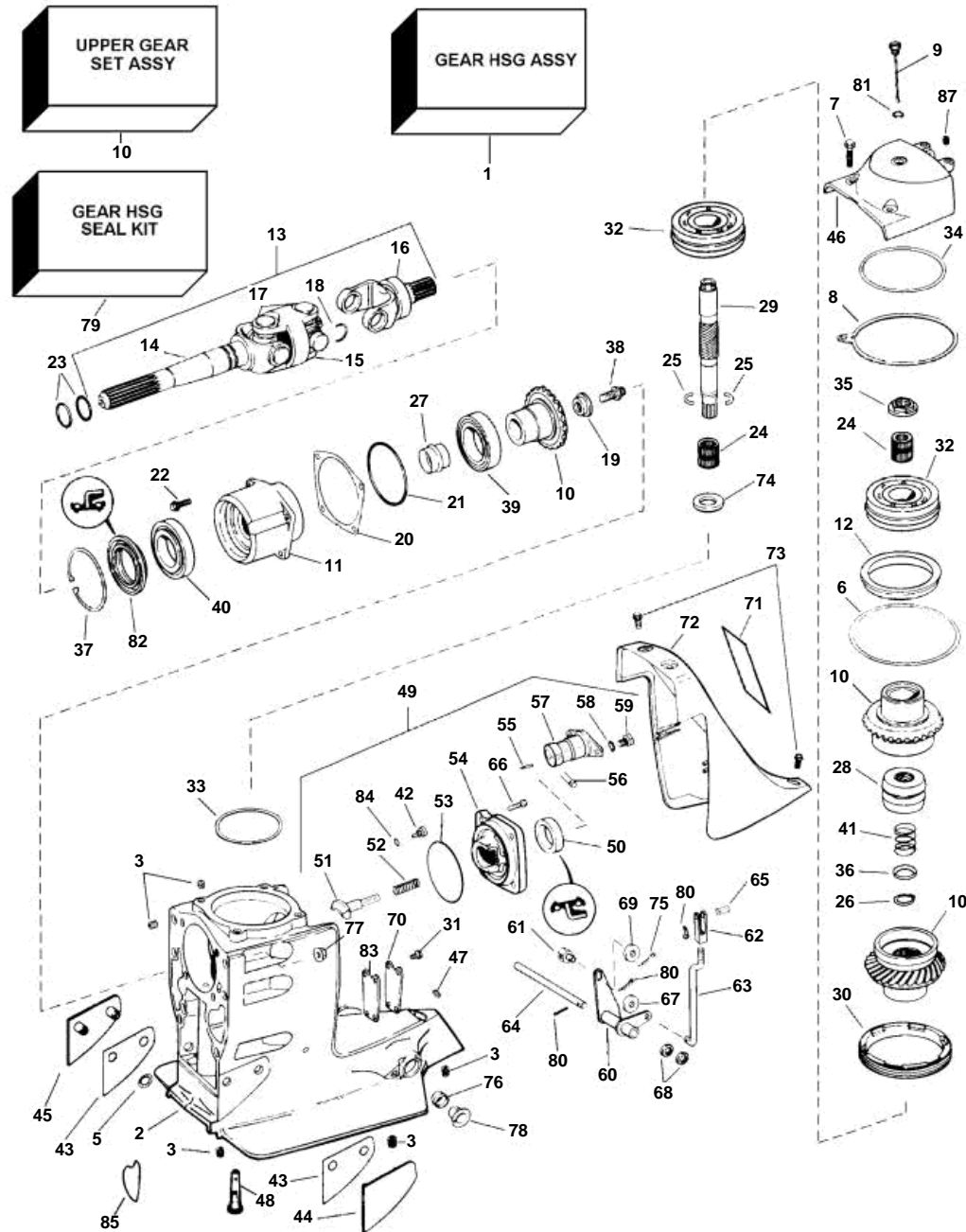


SX-C2, -RT2; DP-S1 - UPPER GEAR UNIT



SX-C2, -RT2; DP-S1 - UPPER GEAR UNIT

REF	PART NO.	QTY	DESCRIPTION	SEE SEC.	NOTES
	3868581	1	Drive, Complete assy, SX-C2		1.43:1
	3868582	1	Drive, Complete assy, SX-C2		1.51:1
	3868858	1	Drive, Complete assy, SX-C2		1.60:1
	3868583	1	Drive, Complete assy, SX-C2		1.66:1
	3868584	1	Drive, Complete assy, SX-C2		1.79:1
	3868585	1	Drive, Complete assy, SX-C2		1.89:1
	3868586	1	Drive, Complete assy, SX-C2		1.97:1
	3868816	1	Drive, Complete assy, SX-C2		2.18:1
	3868587	1	Drive, Complete assy, SX-RT2		1.66:1
	3868588	1	Drive, Complete assy, SX-RT2		2.18:1
	3868818	1	Drive, Complete assy, SX-RT2		1.79:1
	3868592	1	Complete assy, DP-S1		1.95:1
	3868603	1	Drive, Complete assy, DP-S1		1.78:1
	3868690	1	Drive, Complete assy, DP-S1		2.32:1
1	3857007	1	Upper gear unit, Upper, 22:23		1.43, 1.51, 1.60, 1.66, 1.78, 1.85, 1.95
1	3857010	1	Upper gear unit, Upper, 21:26		1.79, 1.89, 1.97, 2.18, 2.32
2	3855775	1	Gear housing, Upper		
3	3852541	1	· Insert, Threaded, 7116-14		
	3852515	5	· Thread insert, Threaded, 318-16		
	3852513	9	· Thread insert, Threaded, 5116-18		
5	3852516	4	Ring retainer, Thrust plate to upper gear		
6	3852363		Shim, Upper bearing, 0.002 in		0.05 mm; as required
	3852364		Shim, Upper bearing, 0.003 in		0.08 mm; as required
	3852365		Shim, Upper bearing, 0.004 in		0.10 mm; as required
	3852366		Shim, Upper bearing, 0.005 in		0.13 mm; as required
	3852367		Shim, Upper bearing, 0.010 in		0.25 mm; as required
7	3850629	4	Screw, Top cover to upper gear hsg		
8	3852317	1	Gasket, Top cover to upper gear hsg		
9	3854847	1	Oil dipstick, Oil indicator, upper gear hsg cover		
10	3851203	1	Gear set, Upper		DP-S1 1.68,1.78,1.95 only
	3851505	1	Gear set, Pinion & drive gears		1.43,1.51, 1.60,1.66,1.85
	3851793	1	Gear set, Pinion & drive gears		1.79,1.89,1.97, 2.18, 2.32
		2	· DRIVE GEAR		
		1	· PINION GEAR		
11	3852267	1	Bearing carrier, Pinion		
12	3852269	1	Support ring, Upper bearing support		
13	3852384	1	Universal joint		
			Bulletin P-44-1-5	P-44-1-5-EN	U-joints
14	3850815	1	· Yoke		
15	3850813	1	· Intermediate section		
16	3850814	1	· Yoke		
17	3850812	2	· Spider		
18	3850757	4	· Lock clip, U-joint		
19	3852310	1	Washer, Pinion gear		
20	3852355		Adjusting washer, Bearing carrier, 0.003 in (0.08 mm)		

7797530 - - 0-0004

GR960284

Upd: 22 NOV 2005

SX-C2, -RT2; DP-S1 - UPPER GEAR UNIT

REF	PART NO.	QTY	DESCRIPTION	SEE SEC.	NOTES
20	3852356		Adjusting washer, Bearing carrier, 0.004 in (0.10 mm)		
	3852357		Adjusting washer, Bearing carrier, 0.005 in (0.13 mm)		
	3852358		Adjusting washer, Bearing carrier, 0.010 in (0.25 mm)		
21	3852308	1	O-ring, Bearing carrier		
22	3852454	4	Screw, Pinion brg carrier to upper gear hsg		
23	3852565	2	O-ring, U joint		
24	3852390	2	Needle bearing, Drive gear		
25	3852295	2	Lock ring, Upper drive shaft		
26	3852299	1	Snap ring, Spring		
27	3852304	1	Sleeve, Bearings, input gear		
28	3855783	1	Sliding sleeve		
29	3852292	1	Shaft, Upper		
30	3852262	1	Retainer, Lower bearing		
31	3852373	4	Screw, Water passage plate & gasket		To upper gear hsg
32	3852389	2	Ball bearing, Drive gear		
33	3852368		Adjusting washer, Lower bearing, 0.002 in		0.05 mm; as required
	3852369		Adjusting washer, Lower bearing, 0.003 in		0.08 mm; as required
	3852370		Adjusting washer, Lower bearing, 0.004 in		0.10 mm; as required
	3852371		Adjusting washer, Lower bearing, 0.005 in		0.13 mm; as required
	3852372		Adjusting washer, Lower bearing, 0.010 in		0.25 mm; as required
34	3852368		Adjusting washer, Upper cover, 0.002 in		0.05 mm; as required
	3852369		Adjusting washer, Upper cover, 0.003 in		0.08 mm; as required
	3852370		Adjusting washer, Upper cover, 0.004 in		0.10 mm; as required
	3852371		Adjusting washer, Upper cover, 0.005 in		0.13 mm; as required
	3852372		Adjusting washer, Upper cover, 0.010 in		0.25 mm; as required
35	3852301		Nut, Upper drive shaft, 0.000 in		As required
	3852302		Nut, Upper drive shaft, 0.008 in		0.2 mm; as required
	3852303		Nut, Upper drive shaft, 0.016 in		0.4 mm; as required
	3852375		Nut, Upper drive shaft, 0.024 in		0.6 mm; as required
36	3852298	1	Washer, Spring		
37	3852307	1	Lock ring, Seal, U-joint assy		
38	3852309	1	Screw, Washer, pinion to U-joint assy		
39	3850852	1	Bearing, Bearing carrier, pinion		Rear
40	3850853	1	Bearing, Pinion to outer carrier		
41	3852296	1	Spring, Clutch cone to shaft		
42	3854539	1	Plug, Oil drain, lower gear case		
43	3852563		Adjusting washer, Thrust plate, 0.015		0.38 mm; as required
44	3852561	1	Thrust plate, Gear hsg, port		
45	3852562	1	Thrust plate, Gear hsg, stbd		
46	3854401	1	Bearing cover, Upper gear unit, top		
47	3852567	2	• Thread insert, Threaded, 5116-18, short		
48	3854021	1	Strainer, Gear hsg		
49	3855787	1	Shift mechanism, Upper gear hsg		Rear
50	853858	1	• Sealing ring		
51	3856502	1	• Shoe		
52	814184	1	• Spring, Shift shoe		

7797530 - - 0-0004

GR960284

Upd: 22 NOV 2005

SX-C2, -RT2; DP-S1 - UPPER GEAR UNIT

REF	PART NO.	QTY	DESCRIPTION	SEE SEC.	NOTES
53	925093	1	· O-ring, Shift actuator		Part of gear hsg seal kit
54	3855785	1	· Bearing housing		
55	973593	1	· Pin, 2 x 12		
56	942871	1	· Pin, 5 x 18		
57	3856008	1	· Eccentric piston		
58	897871		· Adjusting washer		As required
59	897711	1	· Screw		
60	3852276	1	Gear yoke, Shift		
61	3852329	1	Cube, Shift cable to bellcrank		
62	3857218	1	Bracket, Shift linkage		
63	3857217	1	Link rod, Shift linkage		
64	3852277	1	Pin, Shift		
65	3852330	1	Clevis pin, Shift link to piston		
66	3856742	4	Screw, Shift hsg to upper gear hsg		
67	3852184	1	Washer, Trunnion, shift cable to bellcrank		
68	3852193	2	Washer, Shift link to bellcrank		
69	3852083	1	Washer, Pin, bellcrank to gear hsg		
70	3852280	1	Plate, Water passage		
71	3855356	1	Decal, VP SX Cobra		
	3855360	1	Decal, VP SX Diesel		
72	3852418	1	Cover, Upper gear housing		Rear
73	3852568	3	Screw, Cover		
74	3852294	1	Ring, Upper driveshaft		
75	3854480	1	Pin, Trunnion shift cable to bellcrank		
76	3853423	2	Bushing, Pivot pin		
77	3853329	6	Nut, Drive to pivot hsg		
78	3853424	2	Grommet, Pivot pin bushing		
79	3850594	1	Sealing kit, Upper gear hsg		
80	3852052	3	· Cotter pin		
81	3852045	1	· O-ring, Plug, upper gear housing cover		
82	3852272	1	· Seal, U-joint to bearing carrier		
83	3852279	1	· Gasket, Water passage		
84	3855081	1	· O-ring, Oil drain plug		
85	3852560	1	· Seal, Water passage		
	3855644	2	Decal, SX Cobra, gasoline		Not shown
	3855645	2	Decal, SX, diesel		Not shown
	3855646	2	Decal, DP Duoprop, upper gear, port & stbd		Not shown
	3855647	2	Decal, DP Duoprop, upper gear hsg cover		Not shown